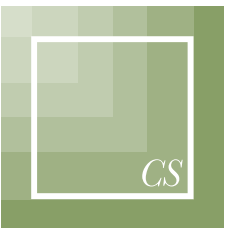


**SKYLINE**<sup>®</sup>



SPECTRA



## *Meet* SPECTRA

The latest design from Skyline Homes is geared towards community living and narrow lot home sites. Designed with the right balance of comfort, utility and spectacular finishes, Spectra is sure to be the talk of the town.

*Explore the beauty within.*



SPECTRA



SPECTRA

*RH*



RH

## *The* KITCHEN

Most agree that the kitchen is the most important room in the home. So, we were careful to think through its design and created a space that is stylish, inviting, and packed with every amenity to keep the chef happy.

- Large 4'x8' island with quartz or granite countertop
- Black stainless-steel appliances from Whirlpool®
- Euro-style rangehood
- Full height ceramic backsplash behind range
- Tall designer chrome faucet with pull-out sprayer
- LED recessed lighting
- Abundant storage



RH



*The*  
**MASTER BATH**  
*You Dream About*

Spectra brightens up your morning ritual and puts a smile on your face, even at 4 a.m.

- 4' x 6' Spa shower including acrylic shower surround, rainforest showerhead, clear glass door, and top-mount chrome roller track
- Large vanity with LED lighted mirrors
- Porcelain vessel sinks and modern brushed nickel faucets



*RH*



*RH*



*CS*



## Home Office

(Available in CS7302J only)

Get organized and boost productivity in your new home office. Spectra CS offers a large built-in desk with 26 sq. ft. of work surface, spacious overhead cabinets, and two drawer banks.

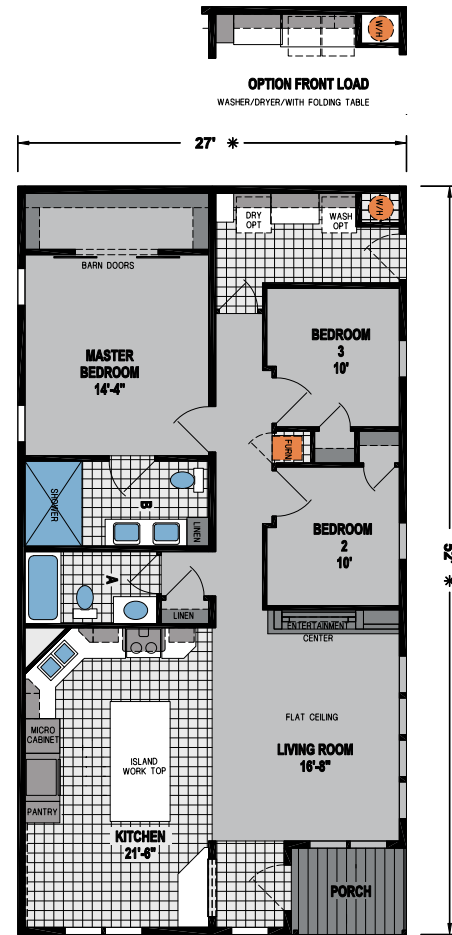


## A "Great" Room

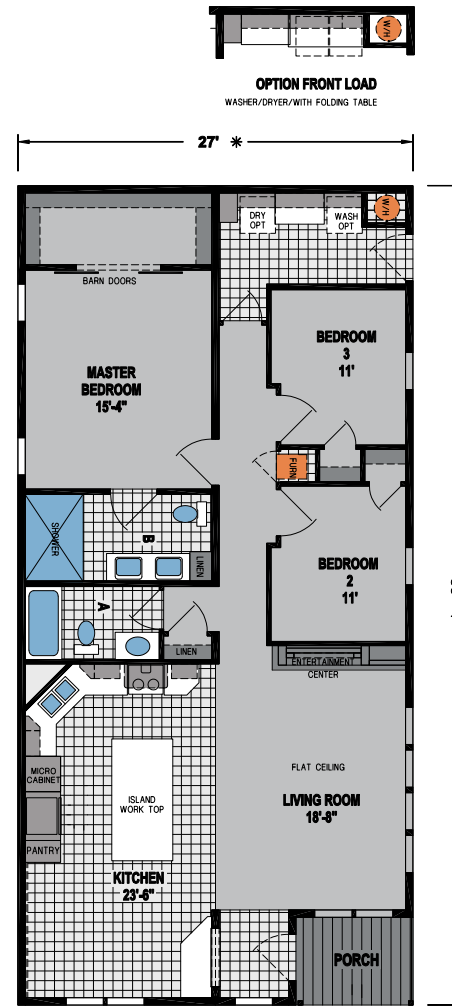
The exceptional features of the Spectra great room make it the perfect space for cozy family time and entertaining.

- Built-in entertainment wall with large TV opening
- Electric fireplace with multiple flame settings and heat controls
- Shelving for your favorite books, DVDs and décor
- Rich wood trim accents
- Stacked faux stone inlay

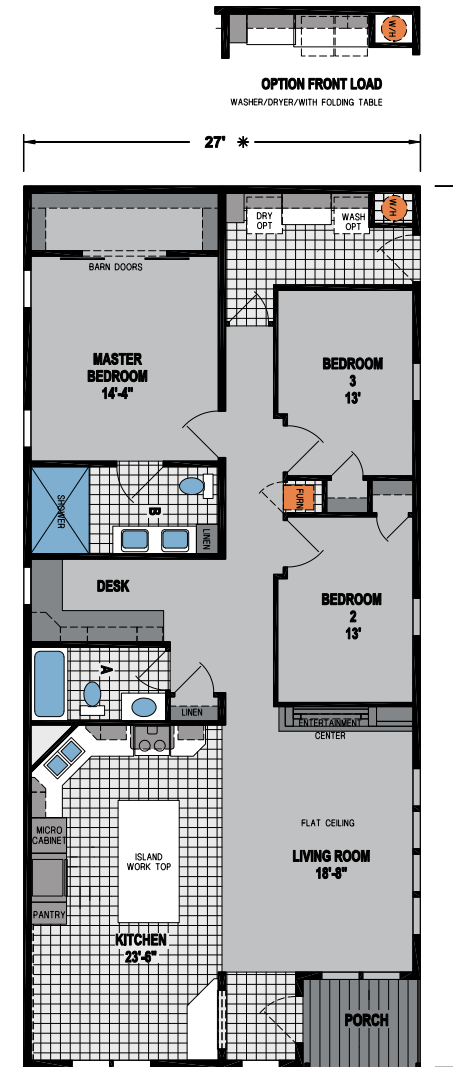
**CS7300J**  
 3 Bed-2 Bath  
 1,404 Sq. Ft.



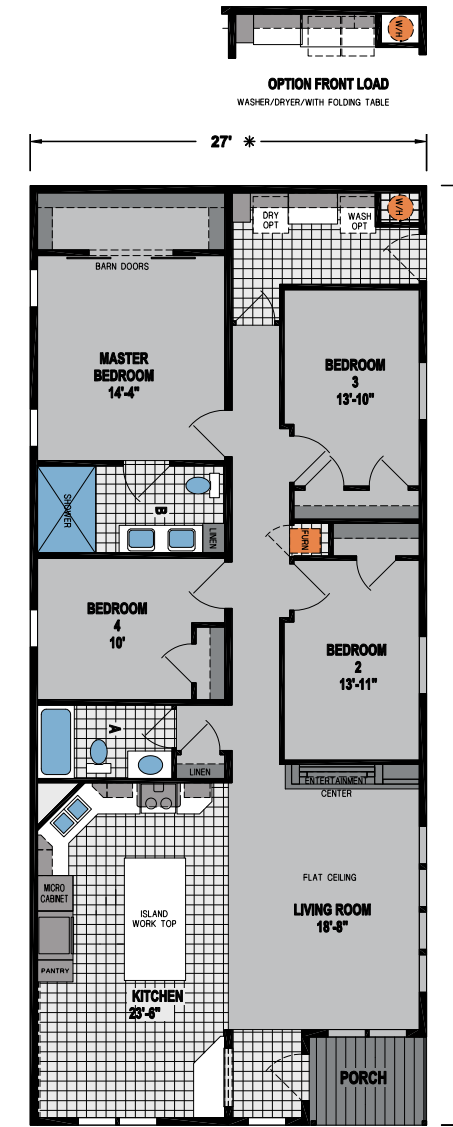
**CS7301J**  
 3 Bed-2 Bath  
 1,512 Sq. Ft.



**CS7302J**  
 3 Bed-2 Bath  
 1,620 Sq. Ft.



**CS7303J**  
 4 Bed-2 Bath  
 1,728 Sq. Ft.



## CS Options

Spectra CS comes in four standard designs ranging from 1,404 to 1,728 sq. ft. Some of the designs have optional configurations that offer additional bedrooms, an office, or a den in place of a bedroom. Your local retailer will be able to review these choices with you.



### Master Closet

The master bedroom closet of the Spectra CS has over 14 lineal feet of hanging space for all your clothes, and a double barn door entry.

## CS Optional Exteriors



## SPECTRA CS STANDARD FEATURES

### CONSTRUCTION

- 2x6 16" O.C. Floor Joists
- Flat Ceiling
- 8' 2x6 Sidewall
- Nominal 3/12 Roof Pitch

### THERMAL

- R-19 Wall Insulation
- R-14 Floor Insulation
- R-25 Ceiling Insulation

### FLOOR COVERING

- Carpeting in Bedrooms
- Vinyl Flooring in Kitchen, Dining, Bathrooms, and Utility

### EXTERIOR

- Limited Lifetime Architectural Shingles
- 30lb Roof Load
- 36" Fiberglass 4-Lite Exterior Front Door
- 36" Fiberglass 9-Lite Exterior Rear Door

### WINDOWS

- Vinyl Windows
- White Mini Blinds Throughout
- Wood Valances in Living Areas and Master Bedroom

### PLUMBING / HEATING

- Electric Furnace
- 30-Gallon Electric Water Heater
- PEX Waterlines
- Perimeter Heating with Insulated Duct Board
- Water Shut-off Valves at All Fixtures
- Toe-Kick Registers in Kitchen and Both Baths

### ELECTRICAL

- 200 AMP Service
- Nest® Thermostat
- One Standard USB Charger in Kitchen
- Exterior GFI Receptacle

### UTILITY

- Standard Plumbing/Wiring for Washer and Dryer
- Drying Rack in Utility
- Metal Furnace Door

### LIGHTING

- 4" LED Can Lights in Kitchen, Dining Room and Walk-in Closets (Per Print)
- Exterior Coach Light at All Exterior Doors

### INTERIOR

- 1/2" Full Finished Drywall with Texture
- Nickel Hardware
- Wire Closet Shelving
- T-Panel White Interior Doors
- Mortised Interior Door Hinges
- Painted Interior Trim Throughout
- Hardwood Craftsman Wainscot with Painted Accent Wall in Dining Room
- Entertainment Center/Electric Fireplace with Stone Accent
- Barn Doors Installed at Master Bedroom Closet

### KITCHEN / APPLIANCES

- 8" Stainless Steel Sink
- Satin Nickel-Pull Down Faucet at Kitchen Sink
- Granite or Quartz Island Countertop
- Crescent Edging in Kitchen
- 42" Kitchen Cabinets
- Adjustable Overhead and Base Shelves in Kitchen Cabinets
- Ceramic Tile Backsplash
- Ceramic Tile Backsplash Behind Range to Under Range Hood
- Soft Close Cabinet Doors and Drawers Guides
- Black Stainless Power Range Hood
- Black Stainless 21 CU. FT. Side-by-Side Whirlpool® Refrigerator
- Black Stainless Whirlpool® Self Cleaning Electric Range
- Black Stainless Whirlpool® Built-in Microwave
- Black Stainless Whirlpool® Dishwasher

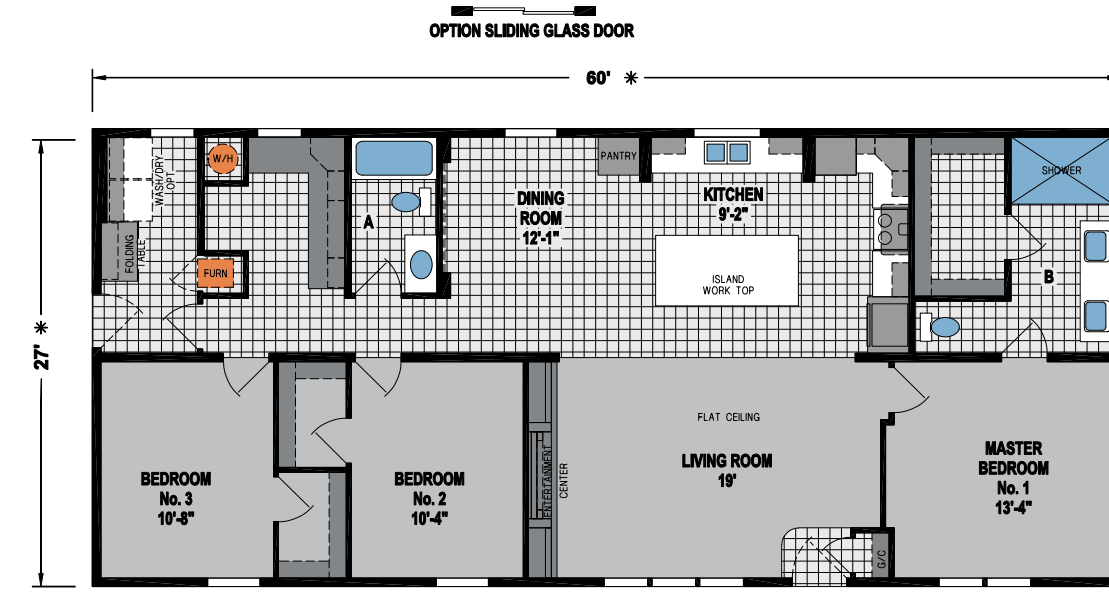
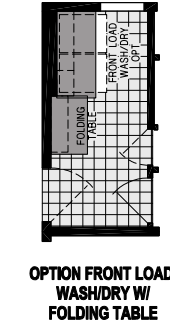
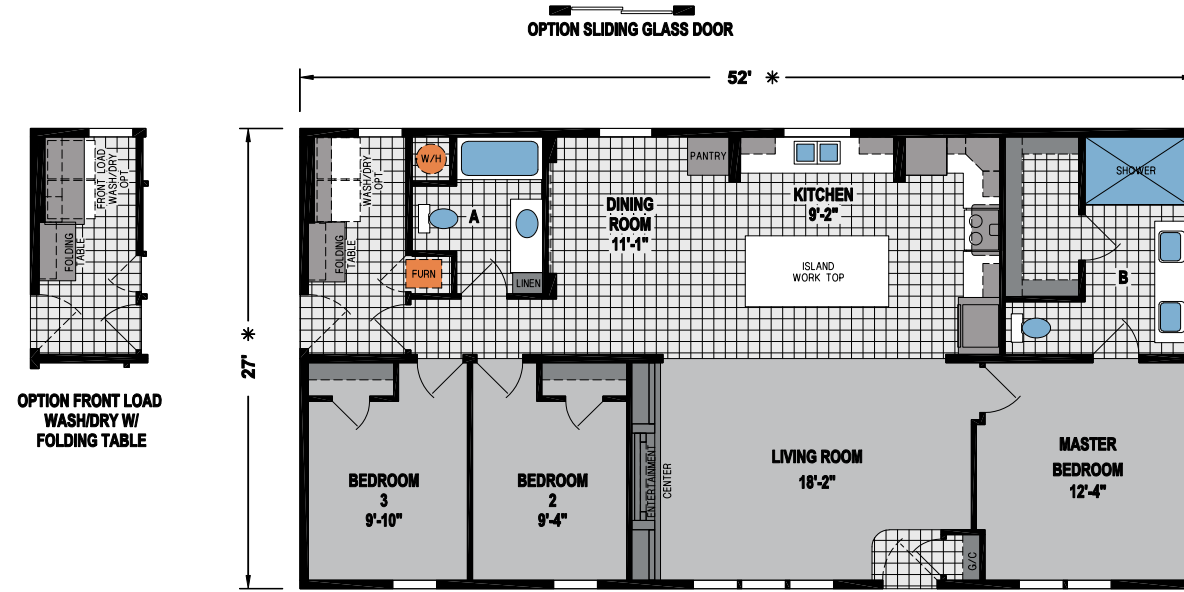
### MASTER & SECONDARY BATH

- China Bath Sink in Hall Bath
- Drawer Bank in Master Bath
- Towel Bars and Paper Holders
- Ceramic Backsplash
- Elongated Commodes
- Crescent Countertop Edge
- Dual-Lever Faucet in Hall Bath
- 1-Piece Fiberglass Tub/Shower in Hall Bath
- 4x6 Agile® Shower with Glass Barn Shower Door
- Satin Nickel Rain Showerhead in Master Bath Shower
- Rectangle Vessel Bowls in Master Bath
- Vessel Faucets in Master Bath – Satin Nickel



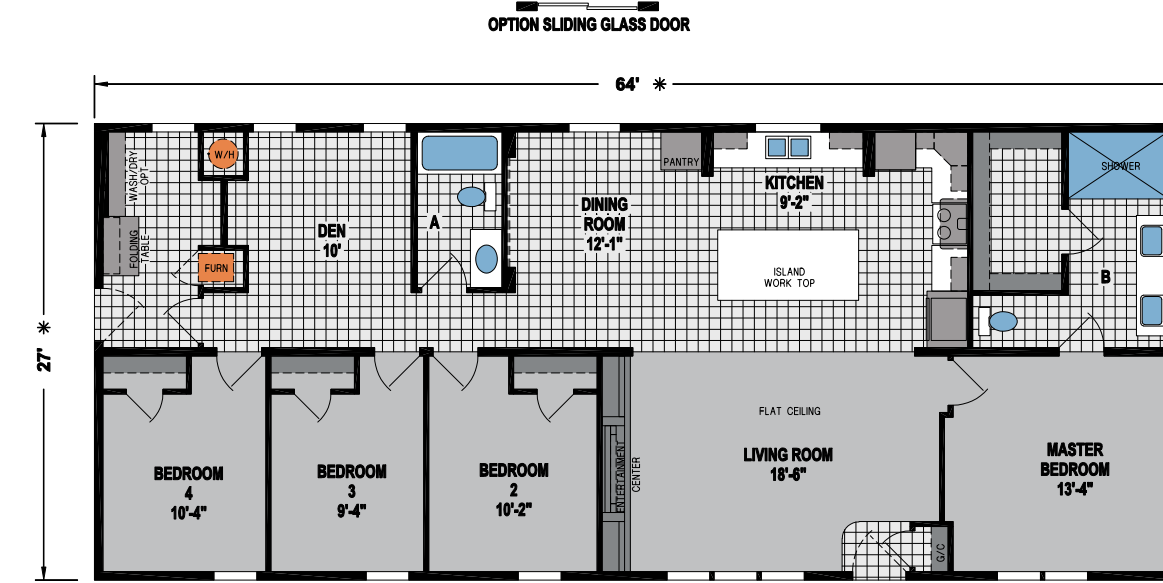
Spectra CS is available in multiple sizes and configurations. All dimensions are approximate. Décor items such as flooring, cabinet finishes, countertop materials, trim/molding, and tile backsplash will vary by region. Appliances shown may vary by region. Some photography shows optional features. Ask your local retailer for details.

**RH7100**  
3 Bed-2 Bath  
1,404 Sq. Ft.



**RH7110**  
3 Bed-2 Bath  
1,620 Sq. Ft.

**RH7105**  
3 Bed-2 Bath  
1,512 Sq. Ft.



**RH7115**  
4 Bed-2 Bath  
1,728 Sq. Ft.







## RH Optional Exteriors



## SPECTRA<sup>RH</sup> STANDARD FEATURES

### CONSTRUCTION

- 2x6 16" O.C. Floor Joists
- Flat Ceiling
- 8' 2x6 Sidewall
- Nominal 3/12 Roof Pitch

### THERMAL

- R-19 Wall Insulation
- R-14 Floor Insulation
- R-25 Roof Insulation

### FLOOR COVERING

- Carpeting in Bedrooms
- Vinyl Flooring in Kitchen, Dining, Bathrooms, and Utility

### EXTERIOR

- Limited Lifetime Architectural Shingles
- 30lb Roof Load
- 36" Fiberglass 4-Lite Exterior Front Door
- 36" Fiberglass 9-Lite Exterior Rear Door
- Step Back Dormer with Cement Panel Siding
- 5/4 Board and Batten Treatment - Front Door Side

### WINDOWS

- Vinyl Low-E Windows
- White Mini Blinds Throughout
- Wood Valances in Living Areas and Master Bedroom

### PLUMBING / HEATING

- Electric Furnace
- 30-Gallon Electric Water Heater
- PEX Waterlines
- Perimeter Heating with Insulated Duct Board
- Water Shut-off Valves at All Fixtures
- Toe-Kick Registers in Kitchen and Both Baths

### ELECTRICAL

- 200 AMP Service
- Nest<sup>®</sup> Thermostat
- One Standard USB Charger in Kitchen
- Exterior GFI Receptacle

### UTILITY

- Standard Plumbing/Wiring for Washer and Dryer
- Drying Rack in Utility
- Metal Furnace Door

### LIGHTING

- 4" LED Can Lights in Kitchen, Dining Room and Walk-in Closets (Per Print)
- Exterior Coach Light at All Exterior Doors

### INTERIOR

- 1/2" Full Finished Drywall with Texture
- Nickel Hardware
- Wire Closet Shelving
- T-Panel White Interior Doors
- Mortised Interior Door Hinges
- White Painted Interior Trim Throughout
- Hardwood Craftsman Wainscot with Painted Accent Wall in Dining Room
- Entertainment Center/Electric Fireplace with Stone Accent
- Barn Doors Installed at Master Bedroom Closet

### KITCHEN / APPLIANCES

- 8" Stainless Steel Sink
- Satin Nickel Pull-Down Faucet at Kitchen Sink
- Granite or Quartz Island Countertop
- Crescent Edging in Kitchen
- 42" Kitchen Cabinets
- Adjustable Overhead and Base Shelves in Kitchen Cabinets
- Ceramic Tile Backsplash
- Ceramic Tile Backsplash Behind Range to Under Range Hood
- Soft Close Cabinet Doors and Drawers Guides
- Black Stainless Power Range Hood
- Black Stainless 21 CU. FT. Side-by-Side Whirlpool<sup>®</sup> Refrigerator
- Black Stainless Whirlpool<sup>®</sup> Self-Cleaning Electric Range
- Black Stainless Whirlpool<sup>®</sup> Built-in Microwave
- Black Stainless Whirlpool<sup>®</sup> Dishwasher

### MASTER & SECONDARY BATH

- China Bath Sink in Hall Bath
- Drawer Bank in Master Bath
- Towel Bars & Paper Holders
- Ceramic Backsplash
- Elongated Commodes
- Crescent Countertop Edge
- Dual-Lever Faucet in Hall Bath
- 1-Piece Fiberglass Tub/Shower in Hall Bath
- 4x6 Agile<sup>®</sup> Shower with Glass Barn Shower Door
- Satin Nickel Rain Showerhead in Master Bath Shower
- Backlit Mirrors in Master Bath
- Rectangle Vessel Bowls in Master Bath
- Vessel Faucets in Master Bath – Satin Nickel



Spectra RH is available in multiple sizes and configurations. All dimensions are approximate. Décor items such as flooring, cabinet finishes, countertop materials, trim/molding, and tile backsplash will vary by region. Appliances shown may vary by region. Some photography shows optional features. Ask your local retailer for details.





**SKYLINE**®

Built in McMinnville, OR